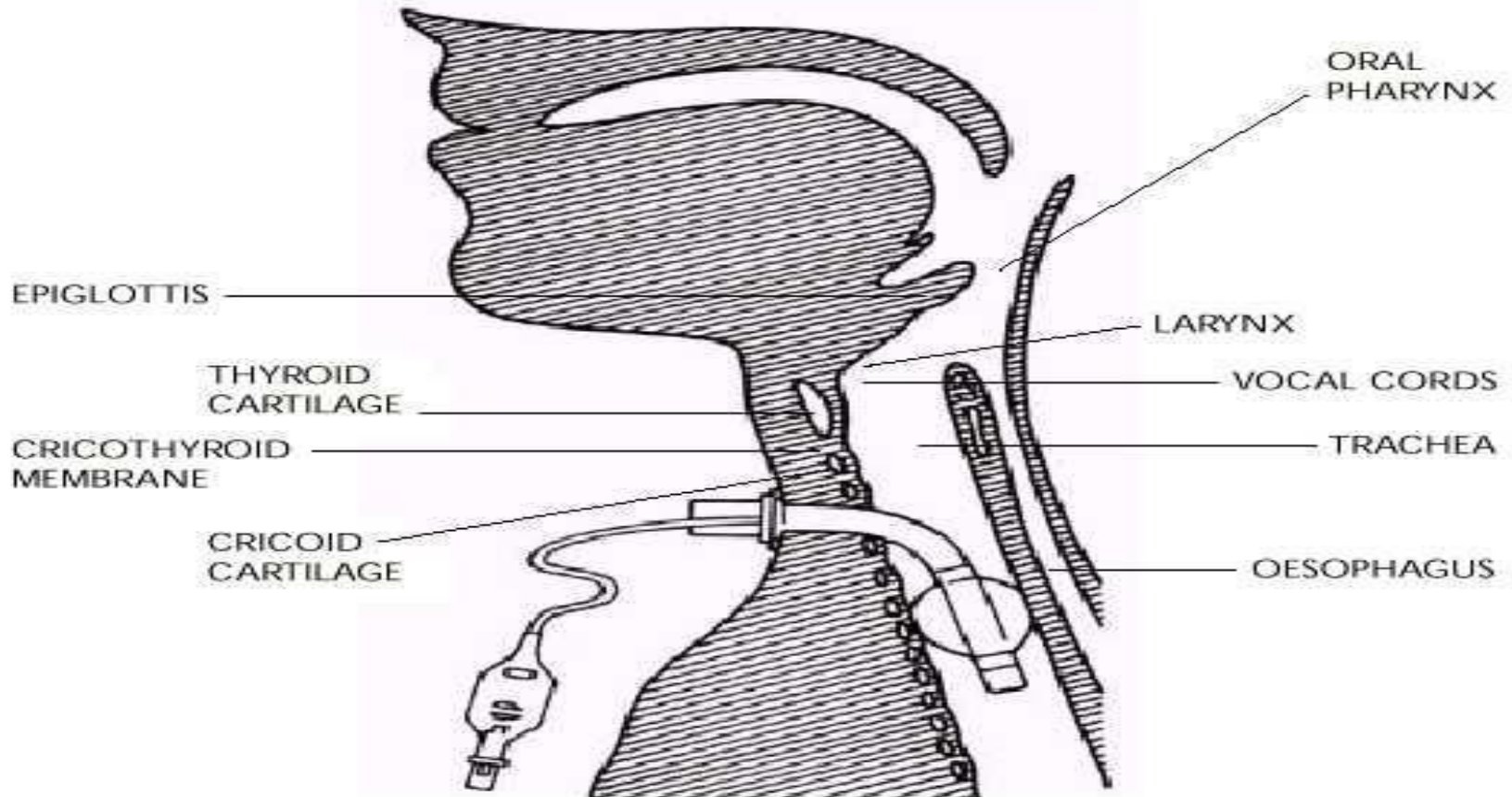


# Tracheostomy





# Cuffed Tubes



# Un-cuffed Tubes



# Fenestrated Tube

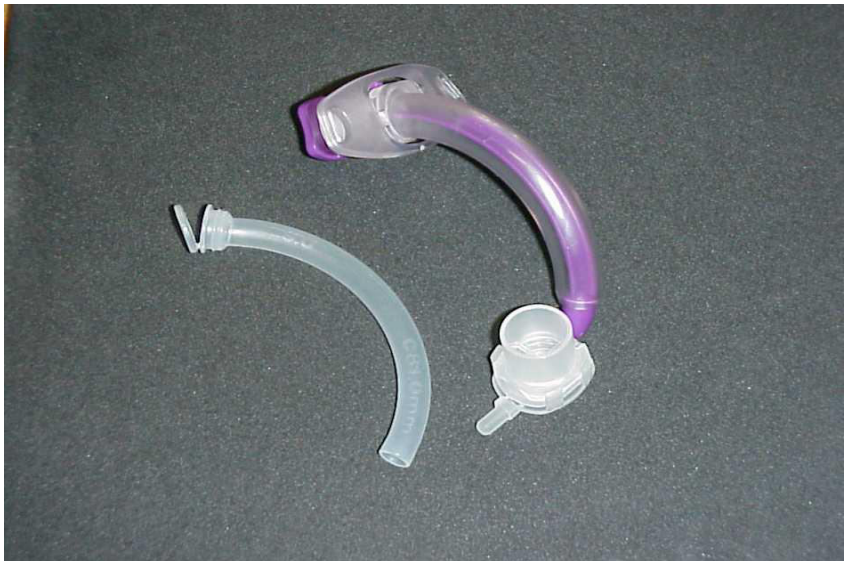
- Increases airflow to larynx/ vocalisation
- Cuffed or un-cuffed
- These are used for weaning
- Enables phonation (speaking)
- The fenestrated tube can be used as such if the patient is tolerating the cuff down
- To suction always use the non fenestrated inner tube for suctioning
- Fenestrated are the only tubes (when inner fenestrated tube insitu and cuff is down) that can be intentionally occluded





# Inner Cannula

- Allows maintenance of tube patency
  - Aids tube hygiene
  - Close observation
- Allows fenestrated tubes to be used earlier



# Tracheostomy (antique)







# Portex minitracheostomy



# Mini Tracheostomy

