



Sahayog Sevabhavi Sanstha's

**MOTHER TERESA NURSING SCHOOL**

Sahayog Educational Campus, Vishnupuri, Nanded-431606. (Maharashtra)

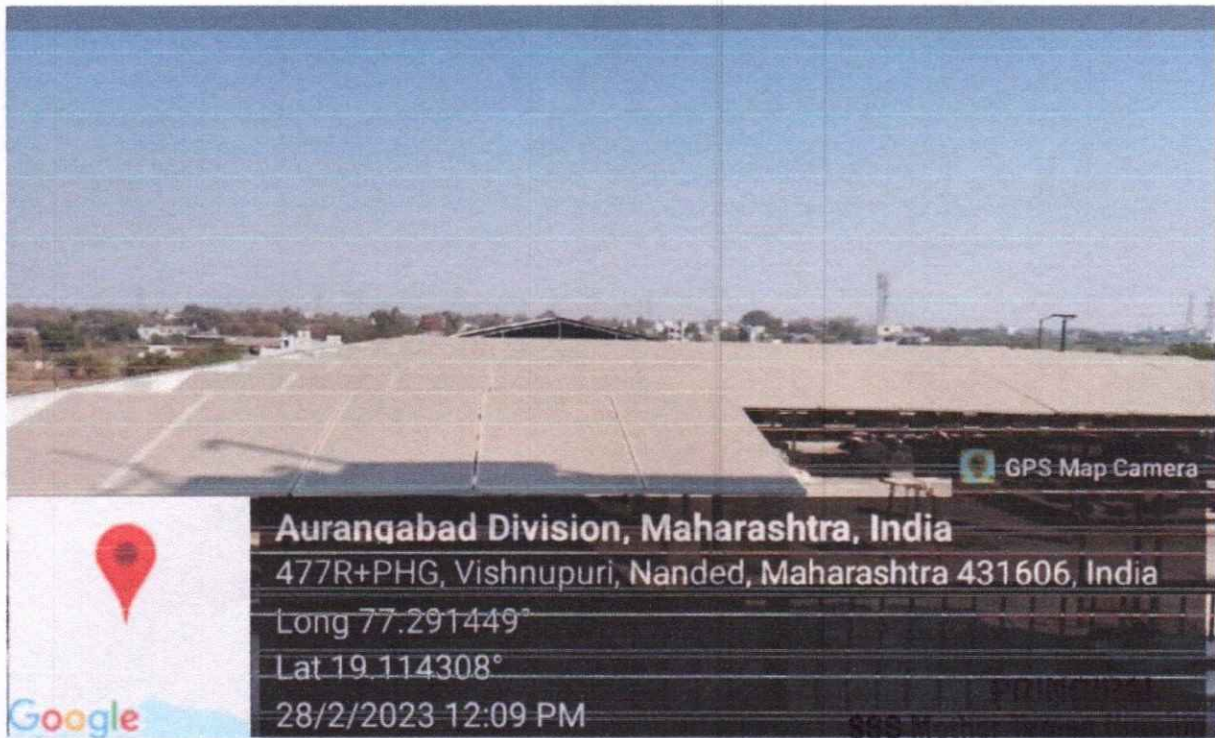
**ALTERNATE  
SOURCE OF  
ENERGY AND  
ENERGY  
CONSERVATION  
MEASURES**





**ALTERNATE SOURCE OF ENERGY AND ENERGY  
CONSERVATION MEASURES**

**SOLAR ENERGY 25 KV PLANT**



S.S. H. School  
Vishnupuri, Nanded-431606

*Etami*



PRINCIPAL  
SSS Mother Teresa Nursing School  
Vishnupuri, Mandya - 581606

*Etami*



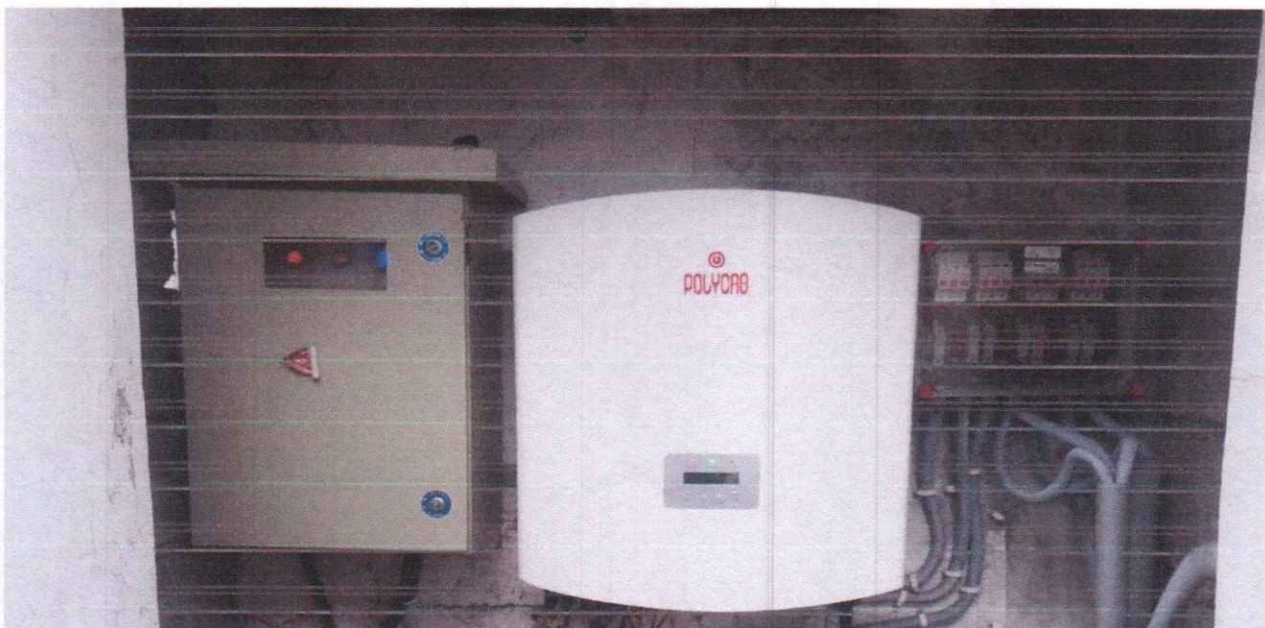
# SOLAR HEATERS



*Principal*  
SSS Mother Teresa Nursing School  
Vishnupuri, Nanded-431606



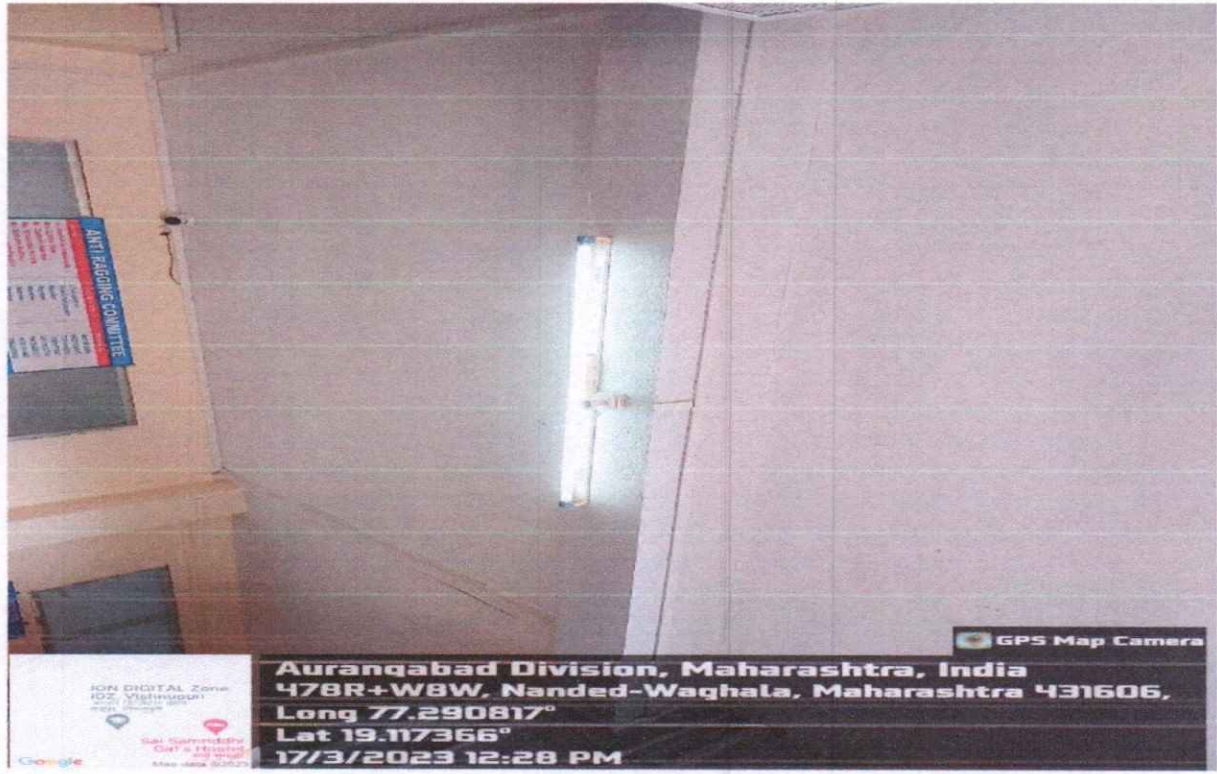
## USE OF POWER INVERTER



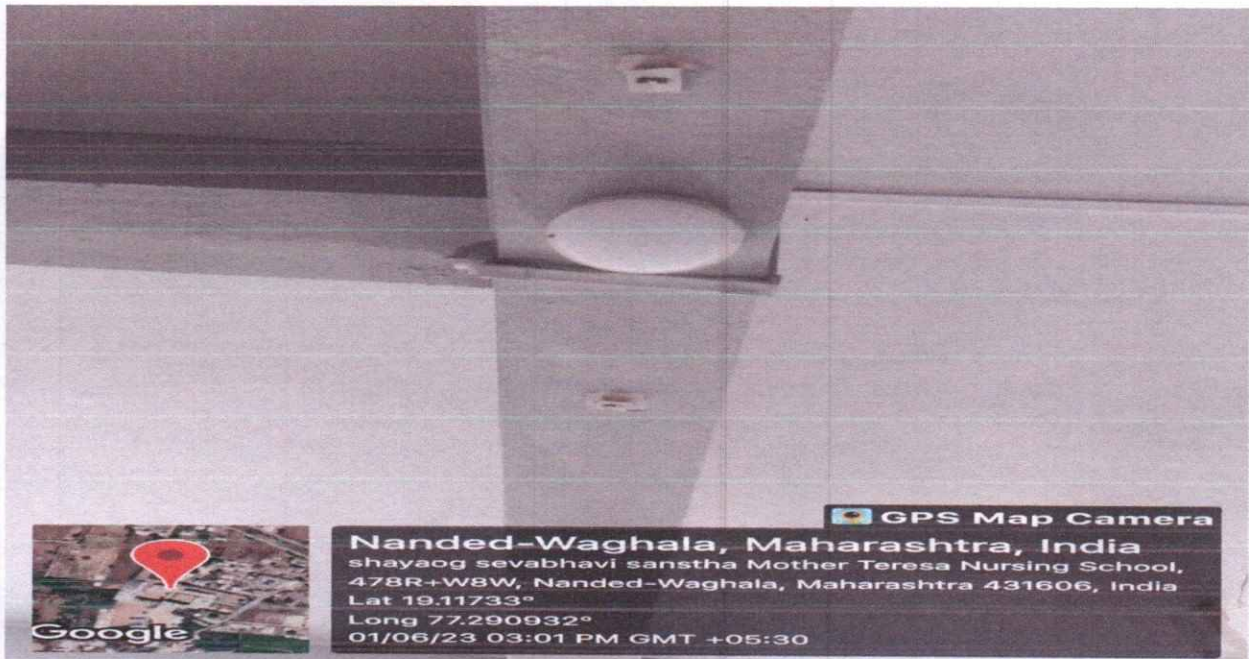
*Etani*  
PRINCIPAL  
SSS Mother Teresa Nursing School  
Vishnupuri, Nanded-431606



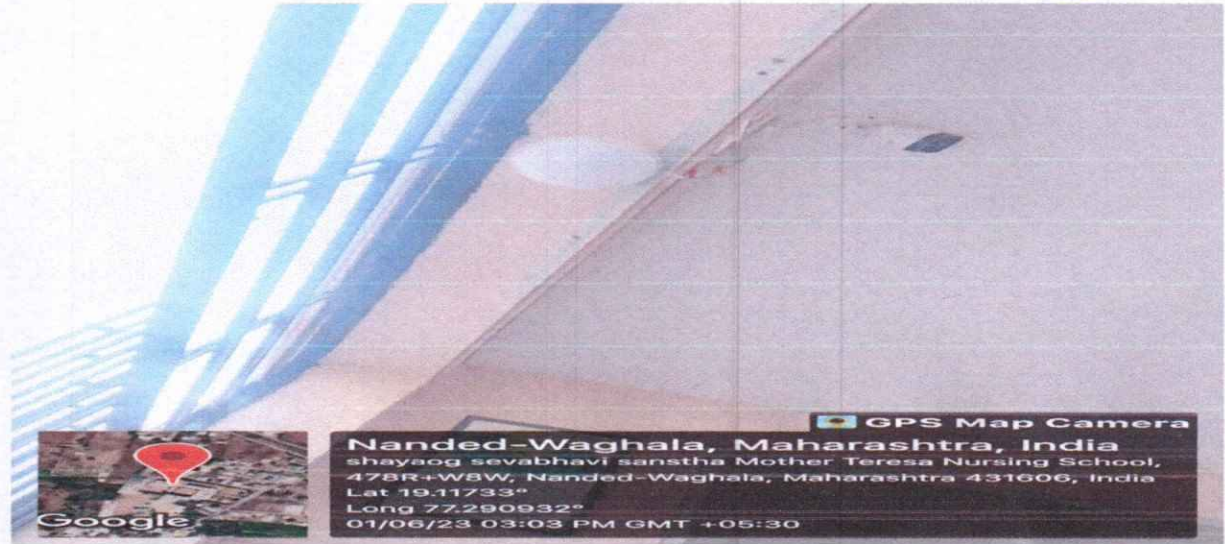
## USE OF LED LIGHT



## SENSOR BASED LED LIGHTS



*Etami*  
PRINCIPAL  
SSS Mother Teresa Nursing School  
Vishnupuri, Nanded-431606



**GPS Map Camera**  
**Nanded-Waghala, Maharashtra, India**  
shayaog sevabhavi sanstha Mother Teresa Nursing School,  
478R+W8W, Nanded-Waghala, Maharashtra 431606, India  
Lat 19.11733°  
Long 77.290932°  
01/06/23 03:03 PM GMT +05:30

*Elani*

**PRINCIPAL**  
**SSS Mother Teresa Nursing School**  
**Vishnupuri, Nanded-431606**



## BIOGAS

Client:

DO's and DON'Ts in Operating Biogas Plant:

Do's:-

- Biogas plant Bio-Digester should be placed in open area of smooth & even surface to avoid any physical damage.
- Biogas plant must be filled with cow dung as inoculum for initial start-up only.
- Biogas plant should be fed daily without fail for the proper operation of the plant.
- Solid organic wastes such as vegetable waste, food waste, fruit peels must be mixed with water in a ratio of 1:1 before feeding into the biogas plant.
- The particle size of the solid waste should be below 25 mm.
- The liquid organic wastes like leftover milk, curd, rice wash water, dhal wash water, kanji waste water etc can be directly fed into the digester
- The gas hose piping from the biogas plant to the kitchen biogas stove is recommended to be in a tapered position. Slurry from the biogas plant should be diluted with water before using it as fertilizer.
- Water in the outer water jacket portion must be checked at regular time intervals in order to make sure that the water level is not falling down.
- Proper amount of waste must be fed into the biogas plant as recommended.

Don'ts:-

- Do not over feed the biogas plant as it creates acidity & reduction in microbial population. Avoid feeding chemicals, acid (avoid acidic substances like tamarind & Citrus fruit wastes), plastics, papers, glass & rubber into the biogas plant which will affect the biogas plant functioning by killing methanogenic microbes.
- Avoid feeding more waste into the biogas plant if the previously generated biogas is not used and is stored in the gas holder.

*Efani*

PRINCIPAL

SSS Mother Teresa Nursing School  
Vishnupuri, Nanded-431606





*Elani*

**PRINCIPAL**

**SSS Mother Teresa Nursing School  
Vishnupuri, Nanded-431606**