

Sahayog Sevabhavi Sanstha's

MOTHER TERESA NURSING SCHOOL

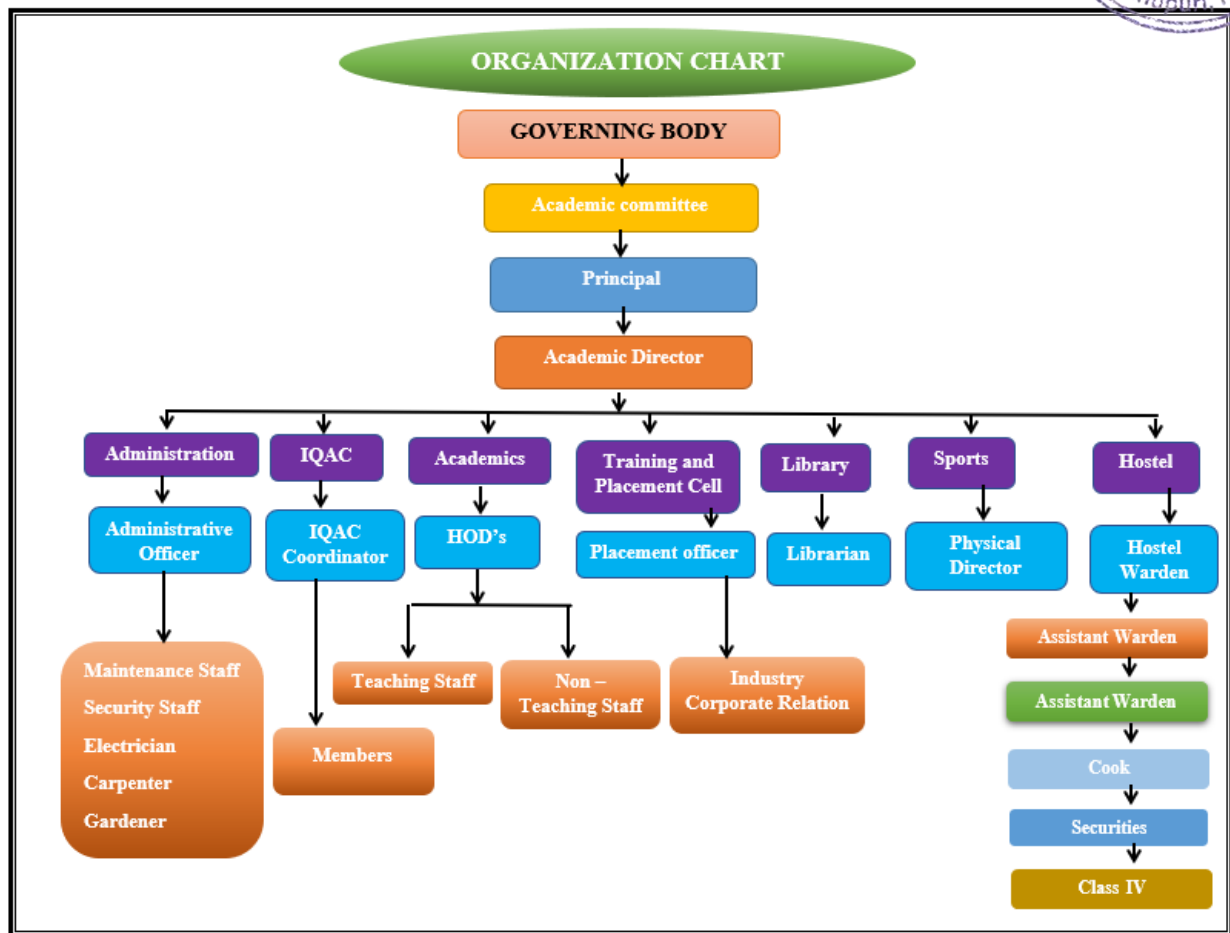
Sahayog Educational Campus, Vishnupuri, Nanded-431606. (Maharashtra)

Affiliated to Maharashtra University of Health Sciences, Nashik, Maharashtra Nursing Council, Mumbai, Recognized by Indian Nursing Council, New Delhi & Govt. of Maharashtra.

Ref. SSS/MTNS/

Date: / /20

6.1.2 Any Additional Information (ORGANIZATION CHART)



PRINCIPAL

SSS Mother Teresa Nursing School
Vishnupuri, Nanded-431606